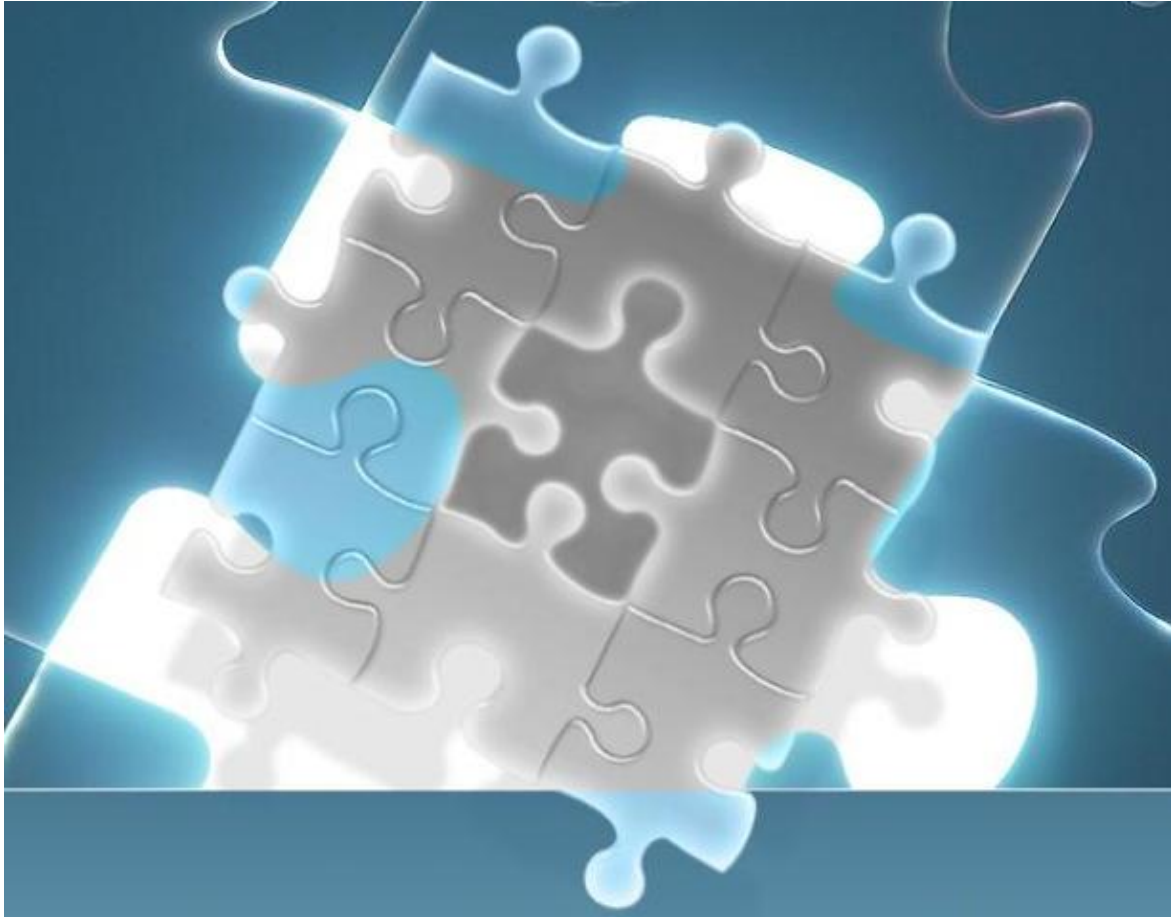


## Installing your logo into LAMUM in Windows



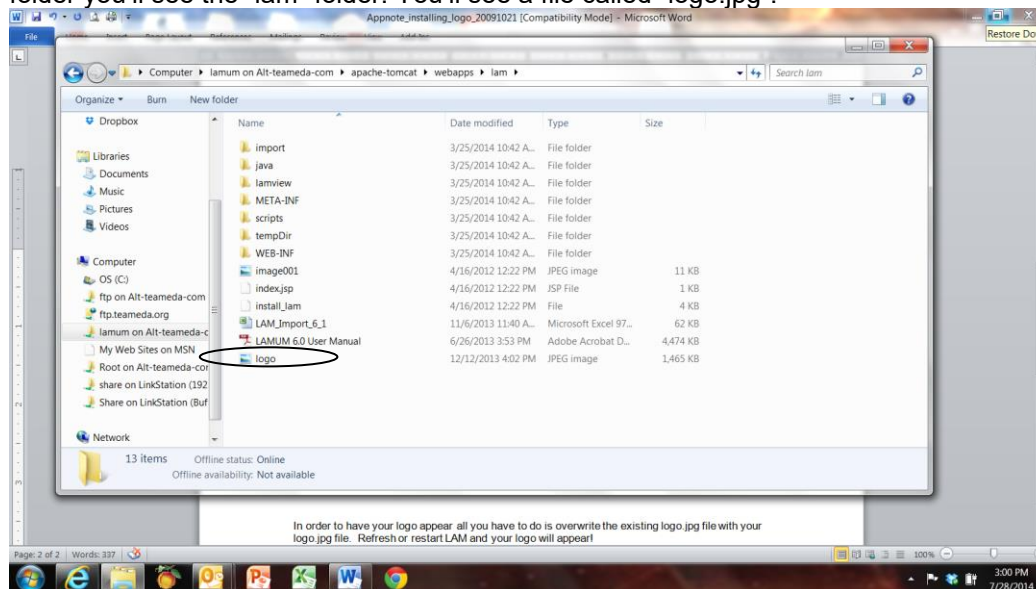
In LAM you have the option to customize the GUI and Reports by installing your company logo. With you logo installed the tool appears more like a customized Company tool. We give you this ability. This App Note describes the process for installing your logo. The image is sized automatically. We highly recommend inserting your logo.

The first thing you'll need to do is select an image that reflects your company's brand (logo). Often times a logo file can be found on company intranet sites, or on your company's public website. If using the Company website, just point, right click, "Save Picture As". Choose .gif or .bmp, but this will have to be converted to .jpg.

To convert to .jpg, open the image in in MSPaint on Windows (or a similar program elsewhere) and then click "File" and then "Save As..." From the dropdown menu at the bottom select the "JPEG or .jpg" option, and save as "logo.jpg." **Note: it must be a lower case .jpg extension (upper case will not work!).**

## Installing Your Logo File

Installing the logo file in LAMUM is easy. In the LAMUM directory there is a folder on Windows called "apache-tomcat". Open this folder. Inside you'll see the "webapps" folder and inside that folder you'll see the "lam" folder. You'll see a file called "logo.jpg".



In order to have your logo appear all you have to do is overwrite the existing logo.jpg file with your logo.jpg file. Refresh or restart LAM and your logo will appear!

Done!

If you have any problems, please contact TeamEDA Support at 603-656-5200 or [support@teameda.com](mailto:support@teameda.com)