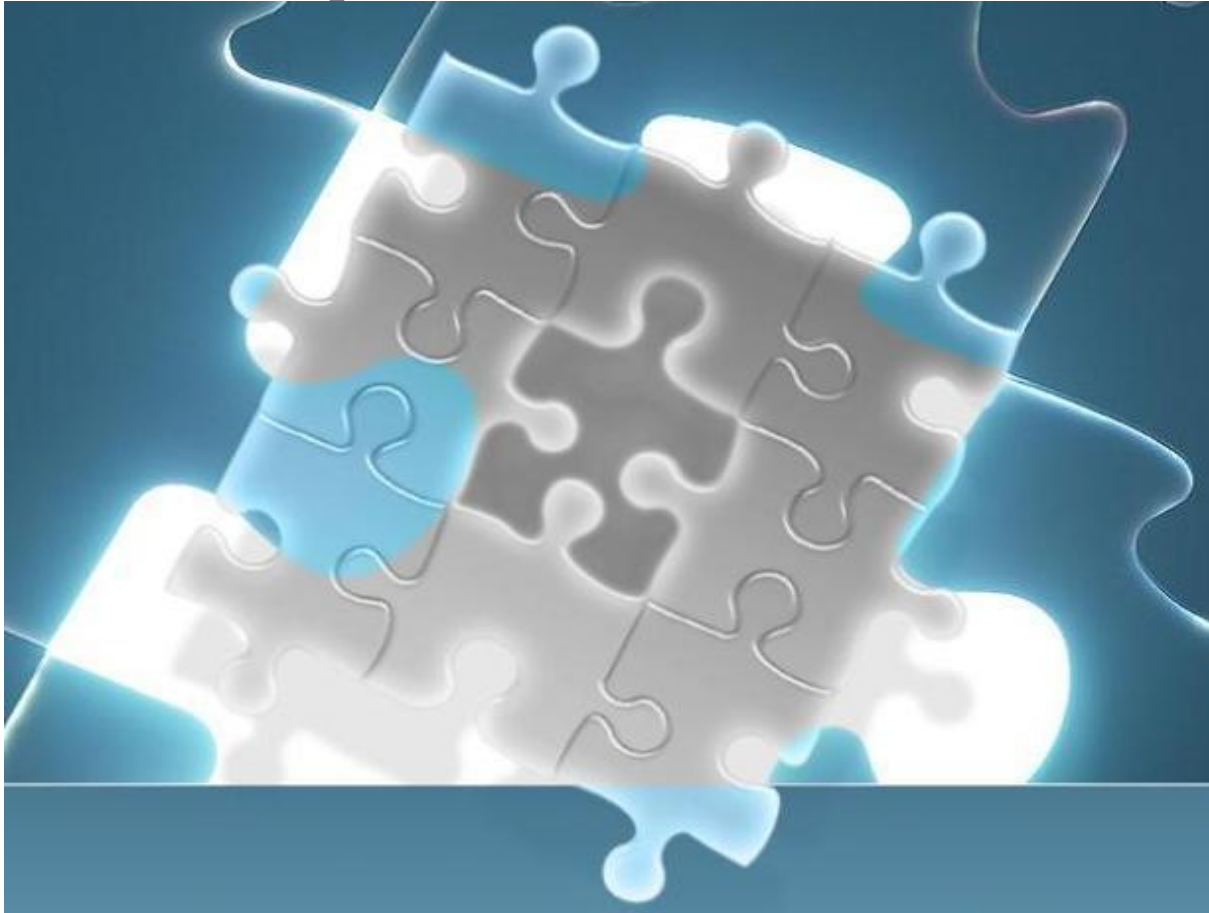


MathLM Setup Notes



Setting up MATHLM is fairly straight forward and easy. It is just like FLEXLM in that you use a port@host and a daemon. The daemon name can be any arbitrary name because it is just a place holder. The port and host should be the exact port and host/server name.

Basic UM Setup:

Click Add a New Line Item under the “Licenses” Tab, select “MathLM” from the “License Type” menu just like you will add a new FlexLM tool.

The screenshot shows the 'LICENSE ASSET MANAGER' interface with the 'Add Line Item' form. The form includes fields for Vendor, Tool/Line Item, Date Acquired, Expiry Date, Quantity, Version, PO#, Tool Type, Purchase Type, Capital \$, Expense \$, Installer, Responsible Person, License No, and Notes. There are also sections for Standalone and Networked configurations, including MakeModel, OS, Standalone Type, HostOrUser, HardwareKey, Restriction, License Type, Log File, and License File. The 'License Type' dropdown menu is open, and 'MathLM' is selected and highlighted with a red circle.

** A daemon/port@host, should be entered to give it the Tag identifier and the hosting server for report generation. The port and host fields are required fields.

Click on Usage tab, do a “Monitor Update”.

MathLM license type will initially show red with unknown Status and unknown Daemon Name.


LICENSE ASSET MANAGER
 Release Version : 8.1.0.0
[Logout](#)

Expirations	PO	Licenses	Usage	Vendors	Tools	Servers	Reports	Settings	Daemon
Home	Current	History	Denials	Users	Groups	Batch	Alerts	Parsers	Admin

Licenses being monitored

Monitor Update

● Scheduler : UP

[Reset Filter\(s\)](#)

Tool Name	Tag Name	Daemon Name	Type	Status	Info	History	User Details	Group Details	Heatmap	Concurrency	Denials	Zero Usage
accurev	accurev_demo	accurev	RLM	OK	Realtime	Graphs	Table	Table	Graph	Graph	Table	Table
AltiumTool	Altium	N/A	Altium	OK	N/A	Graphs	Table	Table	Graph	Graph	Table	Table
GenericTool	GenericParse	unknown	Generic	OK	Realtime	Graphs	Table	Table	Graph	Graph	Table	Table
GenericParser1	GenericParser1	unknown	Generic	OK	Realtime	Graphs	Table	Table	Graph	Graph	Table	Table
GenPar2	GenPar2	unknown	Generic	OK	Realtime	Graphs	Table	Table	Graph	Graph	Table	Table
MATHLM1	mathlm_tag	unknown	MathLM	DOWN	Realtime	Graphs	Table	Table	Graph	Graph	Table	Table

The MathLM client must be installed on the local computer or it can be installed on the LAMUM host computer.

Edit the config.php:

1. Open the LAMUM folder.
2. Open the “**config.php**” using notepad++ or any editor.

config file location: :\LAMUM\apache\htdocs\lammonitor\conf

3. Point the `$lmutil['lmathlm_loc']` (line 24) to the location where the MathLM is installed.

Example:

```
1 <?php
2 // Basic config
3
4 $config['base_url'] = 'http://192.168.1.91:8182/lammonitor/';
5 // $config['base_url'] = 'http://[hostname]:8182/lammonitor/';
6 $config['app_title'] = 'Usage Monitor';
7 $config['app_version'] = '8.0';
8 $config['logfile'] = '/logs/lammonitor.log';
9 $config['lam_config'] = '/lam/config_lam.txt';
10 $config['featureinfo'] = '/lam/featureinfo.php';
11 $config['timezone'] = 'America/New_York';
12 $config['locale'] = '';
13 $config['root'] = 'C:\LAMUM\lammonitor';
14 $config['systemroot'] = 'C:\LAMUM\System';
15
16 // License manager tools location
17 $lmutil['lmutil_loc'] = 'C:\LAMUM\apache\htdocs\lammonitor\utils\demo\lmutil.bat';
18 $lmutil['rlmutil_loc'] = 'C:\LAMUM\apache\htdocs\lammonitor\utils\demo\rlmutil.bat';
19 $lmutil['sentinelrms_loc'] = 'C:\LAMUM\System\Sentinel\lsusage.exe';
20 $lmutil['i4blt_loc'] = '';
21 $lmutil['dslicsrv_loc'] = '';
22 $lmutil['almutil_loc'] = 'C:\LAMUM\System\LMX\almutil.exe';
23 $lmutil['lmxendutil_loc'] = 'C:\LAMUM\System\LMX\lmxendutil.exe';
24 $lmutil['lmathlm_loc'] = 'C:\LAMUM\System\MATHLM';
25 $lmutil['windchill_loc'] = '';
26
```

Refresh LAMUM page, click “Monitor Update” in Usage/Home. Go to Usage/Admin/Data Collection Interval and click on “Run Cron”. This will force the cron operation for LAMUM to start collecting data.

Go back to Usage/Home. You should now see a green light for the MathLM tool.


LICENSE ASSET MANAGER
 Release Version : 8.1.0.0
[Logout](#)
 Expirations PO Licenses **Usage** Vendors Tools Servers Reports Settings Daemon
 Home Current History Denials Users Groups Batch Alerts Parsers Admin

Licenses being monitored

Monitor Update

● Scheduler : UP [Reset Filter\(s\)](#)

Tool Name	Tag Name	Daemon Name	Type	Status	Info	History	User Details	Group Details	Heatmap	Concurrency	Denials	Zero Usage
accurev	accurev__demo	accurev	RLM	OK	Realtime	Graphs	Table	Table	Graph	Graph	Table	Table
AltiumTool	Altium	N/A	Altium	OK	N/A	Graphs	Table	Table	Graph	Graph	Table	Table
GenericTool	GenericParse	unknown	Generic	OK	Realtime	Graphs	Table	Table	Graph	Graph	Table	Table
GenericParser1	GenericParser1	unknown	Generic	OK	Realtime	Graphs	Table	Table	Graph	Graph	Table	Table
GenPar2	GenPar2	unknown	Generic	OK	Realtime	Graphs	Table	Table	Graph	Graph	Table	Table
MATHLM1	mathlm_tag	mathlm	MathLM	OK	Realtime	Graphs	Table	Table	Graph	Graph	Table	Table

Output file (filename: [port@servername.txt](#), as shown in screenshot below) will be generated in your **tmp** folder.

tmp folder location: `:\LAMUM\apache\htdocs\lammonitor\tmp`

OS (C:) > LAMUM > apache > htdocs > lammonitor > tmp

Name	Date modified	Type	Size
2233@192.168.1.200.expire.txt	2/28/2018 3:30 AM	Text Document	0 KB
2233@192.168.1.200.txt	2/28/2018 2:45 PM	Text Document	0 KB

File name sample

Below is the sample output file.

Online help is available at
<http://reference.wolfram.com/network>

MathLM Version: 10.4
MathLM Server: XXXX.corp.XXXXX.com
Date: Tuesday, July 26 2016 13:10:52

License Usage Summary:

Program	License Class	Total in Use	Total Authorized
Mathematica	B	2	15
MathKernel	B	2	15
Sub Mathematica	B	0	120
Sub MathKernel	B	0	120

Licenses in Use:

Program	Version	License Class	Username	Hostname	Duration
Mathematica	10.0	B	h149156	WKS442913.corp.xx	14:46:32
Mathematica	10.0	B	h149156	WKS442913.corp.xx	15:48:59
MathKernel	10.0	B	h149156	WKS442913.corp.xx	14:46:29
MathKernel	10.0	B	h149156	WKS442913.corp.xx	15:48:55

Contact TeamEDA for questions:

603-656-5200

support@teameda.com