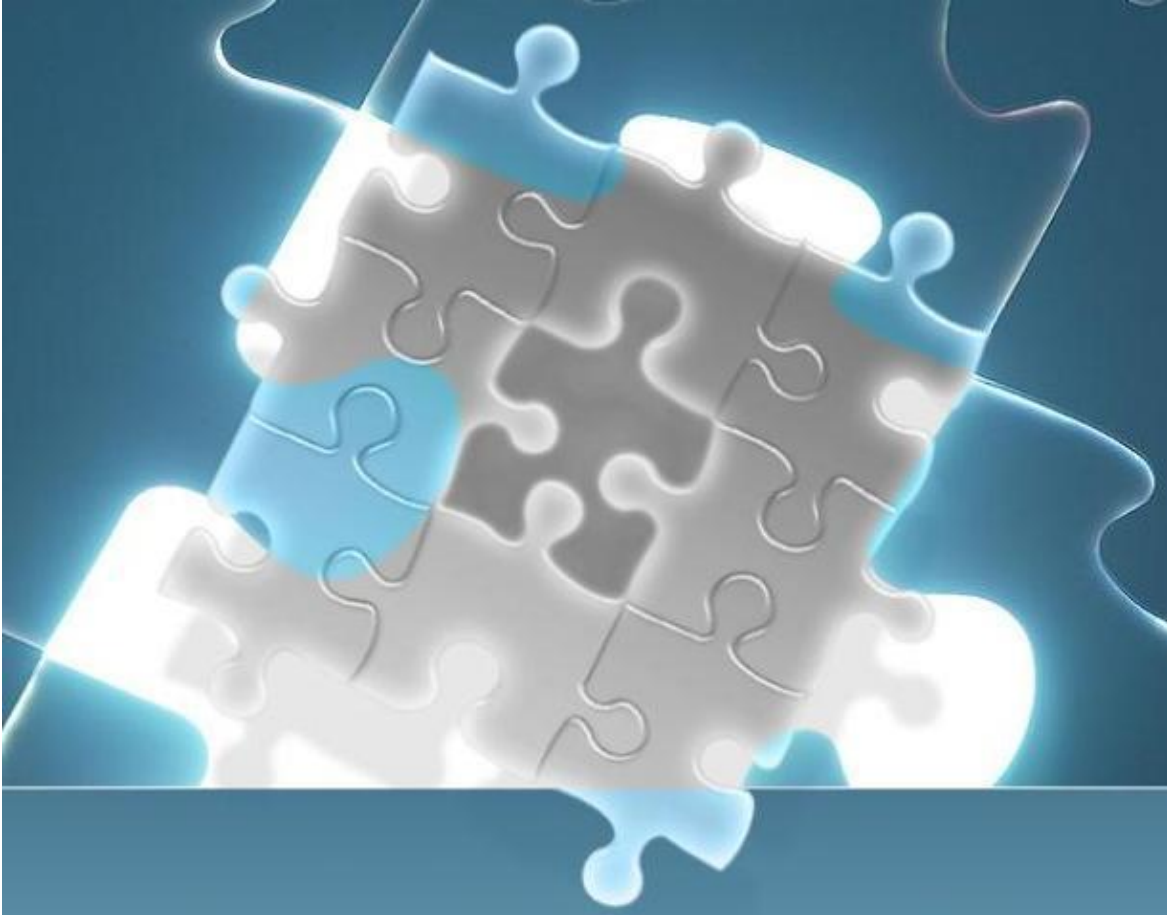




White Paper

Creating a User Dashboard



A Dashboard is a high-level cover page that has hyperlinks to various pieces of usage information, and closely related documentation. It is typically created for casual Users (engineers) and Managers. It is designed so that Users can click on a simple hyperlink and get desired Current checkout status reports, historical usage reports, or LAMUM documentation. It is created for the engineering community where it will be only occasionally used to check and see if licenses are available or if not, who is using the application and for how long, to look at weekly usage patterns, or to view relevant LAMUM documentation. Making Current Checkout information visible has additional benefits: it could/will prevent engineers for sitting on licenses (realizing that someone will be able to see it). It should actually make engineers more productive.

For the more intense LAMUM users, on-demand (Favorite) links in their Browser can be created for each individual person. That is covered in a separate document.

Typical hyperlinks could be set up to view:

- Current Checkouts Overview
- Current Checkout detail for major or critical applications/features
- Heatmaps for major or critical applications/features (most recent 7 days)
- Heatmaps for major or critical applications/features (most recent 30 days)
- Relevant White papers or App Notes
- TeamEDA website

The Dashboard can be anything that can hold hyperlinks and is easily accessible- SharePoint, ShareLink, WordPress, DropBox, Google Docs, etc. Even a WORD document can be a Dashboard.

The Usage report hyperlinks must be created from the :8182 portal. Simply create the report and copy the :8182 URL. If it's a document from the TeamEDA website, again copy the link for that document. Paste it into the Dashboard and give the URL hyperlink a user-friendly name.

Example using WORD:

| LAMUM Dashboard | |
|---|--|
| <p>Current Checkout Status</p> <p>Current Checkout Overview</p> <p>Matlab/Demo2 Current Checkout details</p> <p>NX/Demo Current Checkout details</p> | <p>Weekly Heatmaps</p> <p>Matlab/Demo2 Heatmap</p> <p>NX/Demo Heatmap</p> |
| <p>Documentation</p> <p>Usage Reports Tutorial</p> <p>Monitoring Current Usage methodology</p> | |

Current Checkout Status and Heatmap hyperlinks were added by going the specific report in “the :8182 portal”. Copy that URL, and paste into the Word document. Right mouse click over the URL and select “Edit Hyperlink”. Change the “Text to Display” to something User-friendly.

Documentation hyperlinks were added by going to the TeamEDA website (or your own related website documents), opening up the specific document. Copy that URL, and paste into the Word document. Right mouse click over the URL and select “Edit Hyperlink”. Change the “Text to Display” to something User-friendly.

When a User clicks on a hyperlink it will take them to the current report or document.

WORD is just one option. You may try other Dashboard platforms as you see fit.

Hope this helps.

If you have questions please contact TeamEDA, 603-656-5200