



Application Note

Windchill Setup Notes



Windchill operations and data parsing is different from [daemon/port@host](#) License types. This is because Windchill uses access log files generated by Apache web server.

Basic LAMUM Setup- Add the Windchill license:

Click [Add New Line Item](#) under the “Licenses” Tab. Add Vendor (PTC), Tool (Windchill), # seats. In lower right corner (Networked), select “Windchill” from the “License Type” field list.

LICENSE ASSET MANAGER

Update Line Item

Vendor*: Windchill

Tool/Line Item*: windchillNAME

DateAcquired*: Mar 14 2016

ExpiryDate*: Mar 14 2017

Quantity*: 500

Version:

PO#: Add New PO

Tool Type:

Purchase Type:

Capital \$: 0

Expense \$: 0

Installer:

Responsible Person :

License No:

Notes:

Standalone

MakeModel: no model Add New MakeModel

OS: Add New OS

Standalone Type:

HostOrUser:

HardwareKey:

Networked

Restriction: LAB 101

License Type: Windchill

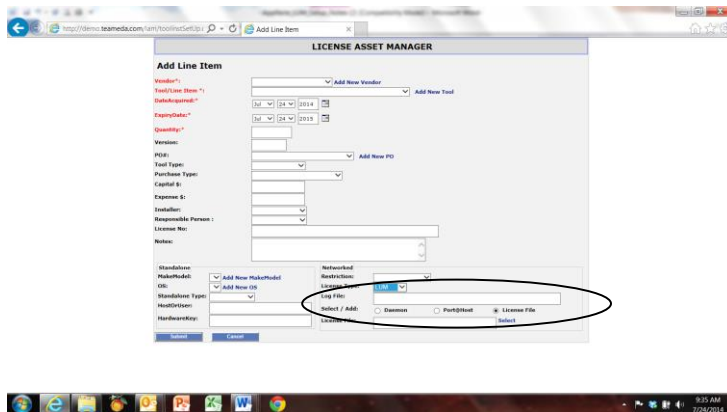
Log File: C:\Windchill_Directory\

Select / Add: Daemon Port@Host License File

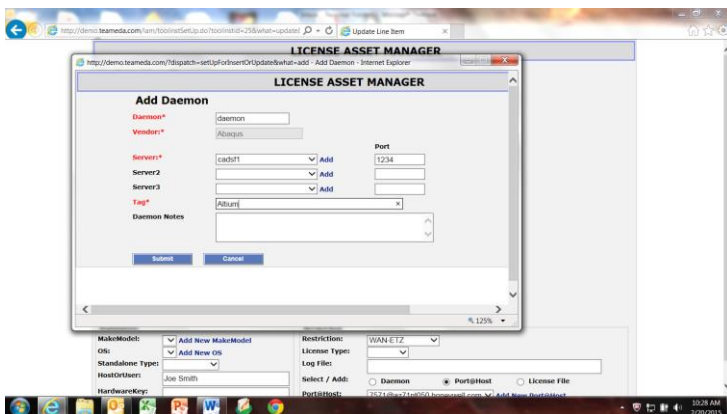
Daemon/ISV: WindchillDaemon@banshee Add New Daemon

Submit **Cancel**

Path to Windchill log file: The full path to the Windchill log file **MUST** be entered in the “Log File” field. Please note that the path should point to the directory which has the Windchill log file and **NOT** the file itself.



Add port@host: A daemon, port@host and Tag must be entered to provide a “Tag” name/identifier for reporting purposes. The server, port, and daemon fields must be populated with something, but it is only a placeholder. Select Port@Host, select Add new Port@Host. Put something in the daemon, server and port fields.



Tag Name: make up a user-friendly reference for the Windchill license, like “Windchill_Server”, or something like that.

Configuring Log Files

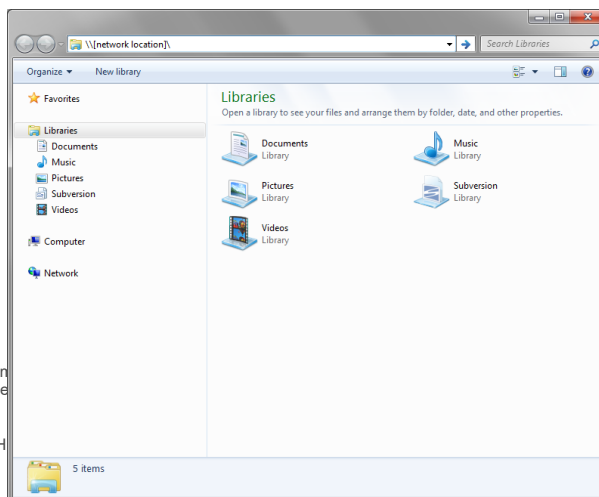
To best configure the log file in LAMUM requires the assistance of the system administrator. You will need to map the network accessible location of the log files to a locally accessible drive letter on the server running LAMUM. For instance if your log files are accessible over the network at `\\yourhost\yourfolder\yourlogfile.dat`, you will need to mount `\\yourhost\yourfolder\` as a local drive (for more information, see “Mapping Network Locations”), like `Z:\`. Once you have that location mapped, your logfile entry within LAMUM will look like [Z:\yourlogfile.dat](#)

Important Note: The username and password for the LAMUM apache service must match the login of the host account, and must be done each time the password is updated

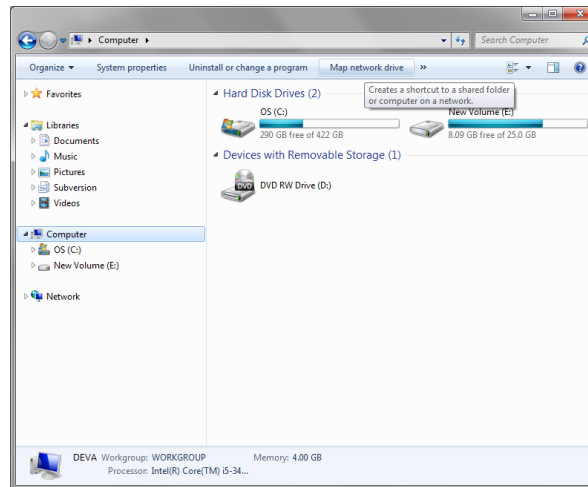
Mapping Network Locations

If you know the location and are used to the Windows Command Prompt, you can simply use the command “`net use [drive letter]:\ [network location] /P:Yes`” if your server requires authorization add “`/user [username] [password]`”. If you are unfamiliar with the Command Prompt, there is a way to accomplish the same from within File Explorer.

1. Open File Explorer.



2. Select “My Computer” and you can either choose “Map network drive” from the top bar, or from the right click menu.



3. In the dialog that pops up, choose an unused drive letter, then “Browse...” to the desired, shared, network location. Make sure you select “Reconnect at Logon” to make the mapping persistent through reboot. If you are getting permission errors, check “Connect using different credentials” and try a user account with higher access rights. Clicking “Finish” creates the mapping.

Detailed Windchill Setup

The Windchill log parsing feature is used to capture the usage data from the log file. The log file locations **must be shared with full permission with both read and write access**. You can set the log file location by going to the **Licenses** tab and selecting **Edit** in the Actions column of the licenses. **Note:** Format should be `\\server\share\folder`

The username and password for the UM Apache service must match the login of the host account, and must be done each time the password is updated.

Use the following steps: Launch the services controller by typing **services.msc** in the menu search box. Edit the **UMServer_LAMUM** service by highlighting and then selecting the **Properties** option from the **Action** pull down menu. Change the login information by selecting the **LogOn** tab, followed by the **This account** radio button. Enter the user name in the text box followed by the password, and then select **OK**. Finish the procedure by restarting the service.

The minimum log parsing collection interval is one day, so the collection time should be shortly before midnight and given enough time for all the Windchill tools to complete their respective parsing operations.

i.e. **23:51**(11:51 pm) every day

To **check** that the log file path has been set up correctly, and/or to do an on demand parsing

of the log files, click the **Parse All Logs** or the **Parse Most Recent Log** button located on the right. This will activate the parsing feature and give you immediate feedback as to the status of each log file.

Complete instructions for the file system setup can also be found in LAMUM by navigating “Usage->Parsers->Windchill Parsing Setup” Tab. Below are the same detailed instructions.

Enter Day of Week and Time of Day for Windchill log parsing

Choose the time of day after apache dumps the daily access log file (24hr clock).

Windchill Log Parse Settings

Right now, your log files are parsed:
Every day at 03:12

Time Interval

Time (24-hr clock)

03 : 12

Update Daily Collection

Parse All Logs Parse Most Recent Log

Notes:
Log files will be read at same set time.

The Windchill log parsing feature is used to capture the usage data from the apache access log file once the user requests have been authenticated or can be identified by cookies. The log file locations **must be shared with full permission** on the server with both read and write access. You can set the log file location by going to the **Licenses** tab and selecting **Edit** in the Actions column of the licenses. **Note:** Format should be `\\server\share\folder`

Important Note. The username and password for the UM apache service must match the login of the host account, and must be done each time the password is updated. Use the following steps:

Launch the services controller by typing `services.msc` in the menu search box. Edit the **UMServer_LAMUM** service by highlighting and then selecting the **Properties** option from the **Action** pull down menu. Change the login information by selecting the **LogOn** tab, followed by the **This account** radio button. Enter the user name in the text box followed by the password, and then select **OK**. Finish the procedure by restarting the service.

The log parsing interval should be after the final daily apache access log is generated.

i.e. (00:30am) every night

To **check** that the log file path has been set up correctly, and/or to do an on demand parsing of the log files, click the **Parse Entire Log** button located on the left. This will activate the parsing feature and give you a feedback as to the status of each log file.

Contact TeamEDA for questions:
603-656-5200
support@teameda.com