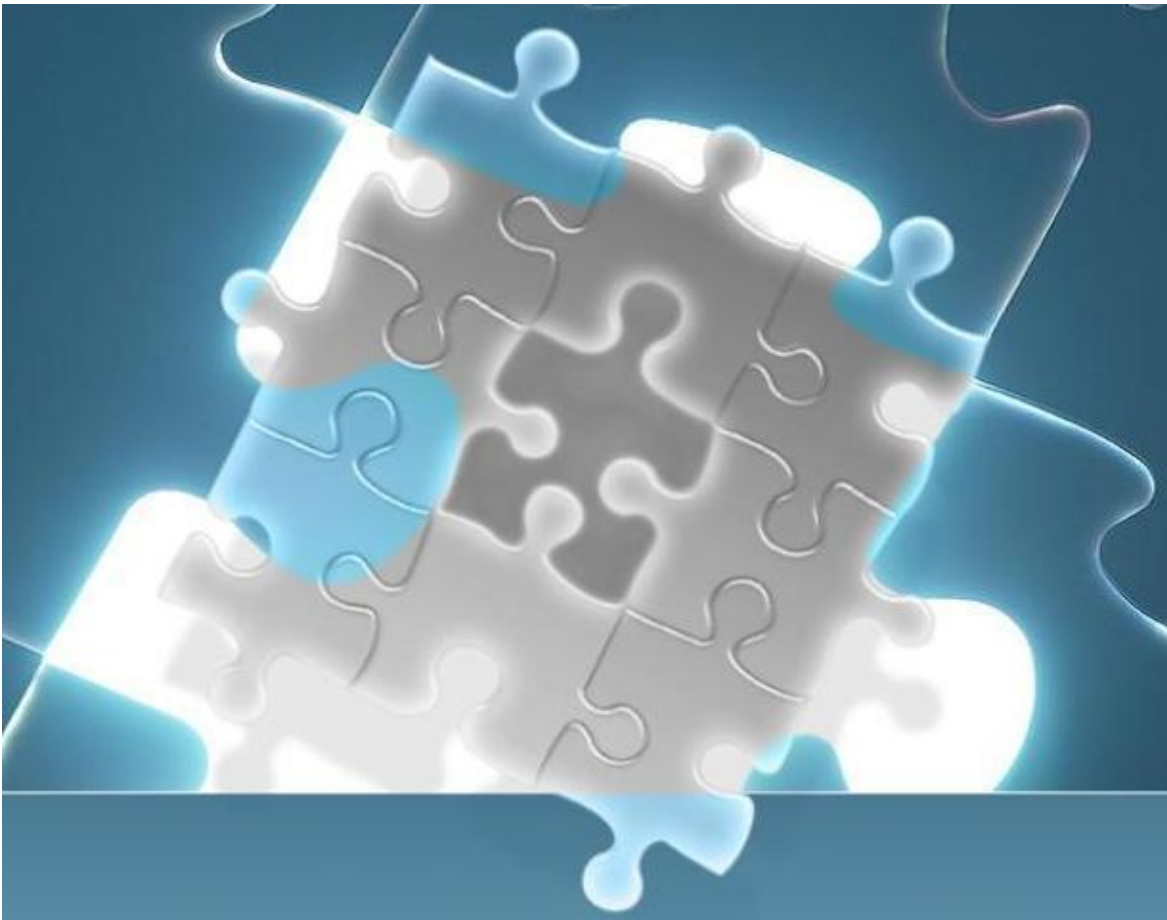




# Application Note

## Dassault DSLS Setup Notes.



The Dassault Systemes License Server (DSLS) setup is similar to a FlexLM server except DSLS executable is not supplied with the LAMUM install.

When setting up a line item under the “Licenses” tab a [port@host](#) must be added . The host being the server that DSLS is installed on, and the port being the DSLS admin port.

When adding a DSLS license, use the standard Add New Line Item in the Licenses Tab. Put in what information you want, then go the “Networked” section (lower right) and under License Type, select DSLS:

Then put in the port@host for the DSLS license. Click the Port@Host button. Click Add New Port@Host.

The DSLS client must be accessible to the LAMUM host computer. A windows version can be downloaded from Dassault Systems. The path to DSLicSrv.exe to the executable must be added to the lammonitor/conf/config.php file.

## Editing the config.php file

The \$lmutil['dslicsrv\_loc'] variable in the LAMUM\apache\htdocs\lammonitor\conf\config.php file needs to point to the DSLicSrv.exe executable.

Once edited, the last line in the below example should look similar to your file.

```
$config['base_url'] = 'http://192.168.1.102:8182/lammonitor/';
// $config['base_url'] = 'http://[hostname]:8182/lammonitor/';
$config['app_title'] = 'Usage Monitor';
$config['app_version'] = '6.1.2.0';
$config['logfile'] = '/logs/lammonitor.log';
$config['lam_config'] = '/lam/config_lam.txt';
$config['featureinfo'] = "";
$config['timezone'] = 'America/New_York';
$config['root'] = 'C:\LAMUM\lammonitor';
$config['systemroot'] = 'C:\LAMUM\System';

// License manager tools location
$lmutil['lmutil_loc'] = 'C:\LAMUM\apache\htdocs\lammonitor\utils\demo\lmutil.bat';
$lmutil['rlmutil_loc'] = 'C:\LAMUM\apache\htdocs\lammonitor\utils\demo\rlmutil.bat';
$lmutil['sentinelrms_loc'] = 'C:\LAMUM\System\Sentinel\lsusage.exe';
$lmutil['i4blt_loc'] = 'C:\IFOR\WIN\BIN\i4blt.exe';
$lmutil['dslicsrv_loc'] = 'C:\Program\DassaultSystemes\DSLlicenseServer\win_b64\code\bin\DSLicSrv.exe'
```

## Testing the DSLS Server

For this example, the admin port is 4084 and the host server is DSLS-Server.

Connect to the license server and get the license usage information,

Open a command shell and navigate to “D:\Program Files\Dassault Systemes\DS License Server\win\_b64\code\bin”.

```
>DSLicSrv -admin -t C:\temp\4084.dsls-server.txt
admin>connect DLSL-Server 4084
admin>glu
admin>quit
```

The file C:\temp\4084.dsls-server-usage.txt contains the feature usage.

Connect to the license server and get the feature expiration information,

```
>DSLicSrv -admin -t C:\temp\4084.dsls-server-usage.txt
admin>connect DLSL-Server 4084
admin>gli
admin>quit
```

The file C:\temp\4084.dsls-server-expire.txt contains the feature expirations.

**Note:** If the C:\temp\4084.dsls-server-usage.txt looks like the following, the admin port for the DSLS server has been password protected. In order to collect usage information in LAMUN, this admin port must be made publicly accessible.

```
admin>connect DLSL-Server 4084
Enter password>
Invalid password
```

## Setting up Locales

DSLS can support local Date and Time formats, such as “Oct 13, 2014 6:47:00 AM” or “13-ott-2014 6.47.00”. In order to provide a correct interpretation of the time stamp, the Locale may need to be set. To determine if this operation needs to be done, navigate to the Usage->Current->{Tool (tag)}->Details page. If the “Checkout Time” field looks similar to the below example, the correction will need to be made.

Logout

Expirations PO Licenses Usage Vendors Tools Servers Reports Settings

Home Current History Concurrency Denials Users Batch Groups Alerts Admin

### Dassault - Information

Following is the list of licenses currently being used.

AutoRefresh Off - Start

Server:4084@DSLS-server1(Dassault)										
Users		Tag Name	Feature	Capacity	In Use	Available	User Machine	Checkout Time	Total Time in Use	
up	down		up	down					up	down
<a href="#">USER1</a>		DSLS-Italy	AMG	9	7	2	PC004426	Thu 1/1 02:00 AM 1970	392609:h 27:m	
<a href="#">USER2</a>		DSLS-Italy	AMG	9	7	2	PC005102	Thu 1/1 02:00 AM 1970	392609:h 27:m	
<a href="#">USER3</a>		DSLS-Italy	AMG	9	7	2	PC004882	Thu 1/1 02:00 AM 1970	392609:h 27:m	

To set the Locale, navigate to “Usage->Admin->Locale Setup” page. By default, the Current Locale is not set and the “Automatic” selection is displayed in the pull down menu. Depressing the update button will retrieve the Locale from the system settings. The desired locale can also be selected from the pull down menu.

Expirations PO Licenses Usage Vendors Tools Servers Reports Settings

Home Current History Concurrency Denials Users Batch Groups Alerts Admin

### Locale Settings.

Current Locale:

Automatic

To check if the Locale has been set correctly, navigate to the “Usage->Current->{Tool (tag)}->Details” page, and notice if the “Checkout Time” field is consistent with the below example.

Expirations	PO	Licenses	Usage	Vendors	Tools	Servers	Reports	Settings	
Home	Current	History	Concurrency	Denials	Users	Batch	Groups	Alerts	Admin

**Dassault - Information**

Following is the list of licenses currently being used.

AutoRefresh Off -

Server:4084@DSLS-server1 (Dassault)										
Users		Tag Name	Feature		Capacity	In Use	Available	User Machine	Checkout Time	Total Time in Use
up	down		up	down						down
<a href="#">USER1</a>		DSLS-Italy			9	7	2	PC005426	Mon 10/6 07:58 AM 2014	228:h 38:m
<a href="#">USER2</a>		DSLS-Italy			9	7	2	PC005182	Mon 10/6 08:21 AM 2014	228:h 15:m
<a href="#">USER3</a>		DSLS-Italy			9	7	2	PC004802	Mon 10/6 08:39 AM 2014	227:h 57:m
<a href="#">USER4</a>		DSLS-Italy			9	7	2	PC004963	Mon 10/6 09:17 AM 2014	227:h 19:m
<a href="#">USER5</a>		DSLS-Italy			9	7	2	PC002907	Mon 10/6 01:52 PM 2014	222:h 44:m

Contact TeamEDA for questions:  
603-656-5200  
support@teameda.com