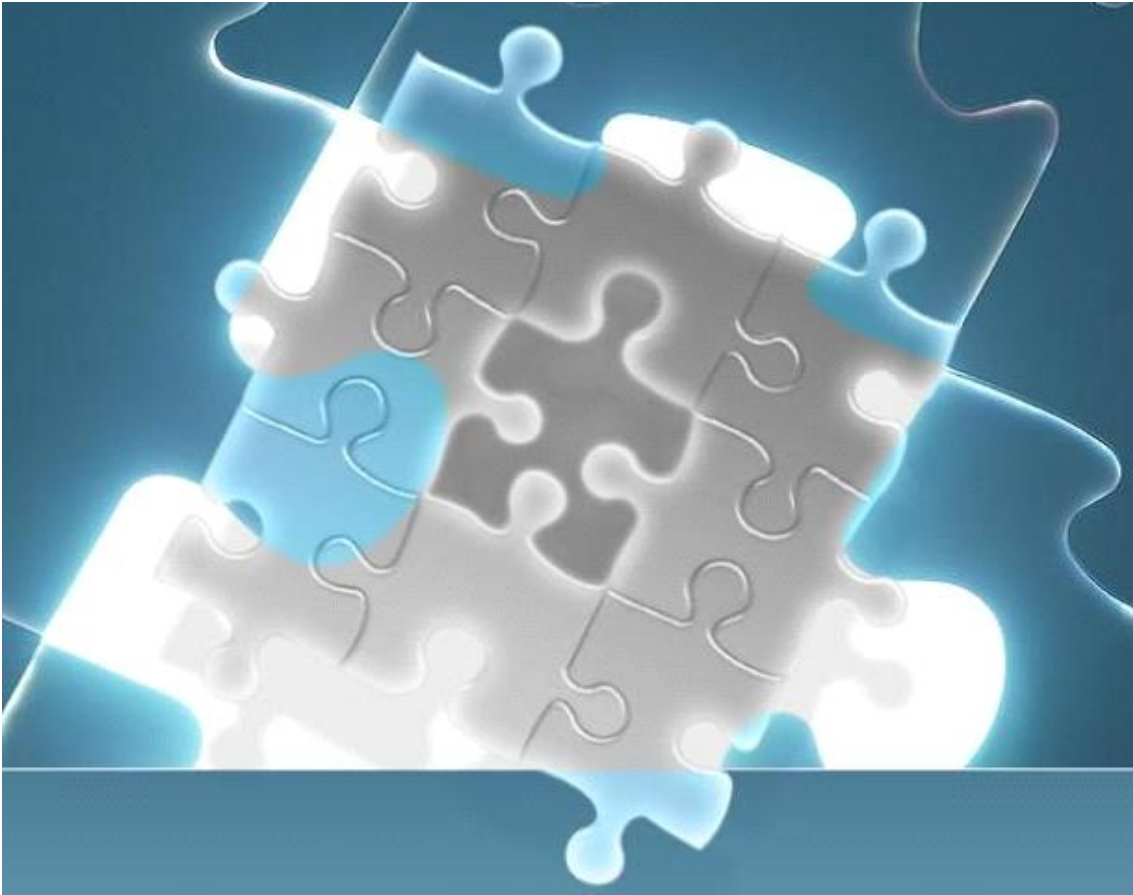




# Application Note

## LM-X Setup Notes



Setting up LM-X is fairly straightforward and easy. It is just like FLEXLM in that you use a [port@host](#) and a daemon. The daemon name can be any arbitrary name because it is just a placeholder. The port and host should be the exact port and host/server name.

## Basic UM Setup:

Click Add New Line Item under the “Licenses” Tab, select “LM-X” from the “License Type”

**LICENSE ASSET MANAGER**

**Add Line Item**

**Vendor\*:**  [Add New Vendor](#)

**Tool/Line Item \*:**  [Add New Tool](#)

**Date Acquired\*:** Oct 23 2015

**ExpiryDate\*:** Oct 23 2016

**Quantity\*:**

**Version:**

**PO#:**  [Add New PO](#)

**Tool Type:**

**Purchase Type:**

**Capital \$:**

**Expense \$:**

**Installer:**

**Responsible Person :**

**License No:**

**Notes:**

**Standalone**

**MakeModel:**  [Add New](#)  
[MakeModel](#)

**OS:**  [Add New OS](#)

**Standalone Type:**

**HostOrUser:**

**HardwareKey:**

**Networked**

**Restriction:**

**License Type:** LM-X

**Log File:**

**Select / Add:**  Port@Host  License File

**License File:** FlexLM, RLM, Sentinel, LUM, DSLS, Altium, LM-X

[Select](#)

[Submit](#) [Cancel](#)

A daemon/port@host, should be entered to give it the Tag identifier and the hosting server for report generation. The default port for LM-X is port 6200. The port and host fields are required fields. The license file option is not presently available for LAMUM. Fill in the other fields and click on submit.

## LM-X Usage Monitoring

On the Usage tab, LM-X license type will initially show red with unknown Status and unknown Daemon Name

Expirations	PO	Licenses	Usage	Vendors	Tools	Servers	Reports	Settings
Home	Current	History	Denials	Users	Groups	Batch	Alerts	Admin

### Licenses being monitored

[Monitor Update](#)

[Reset Filter\(s\)](#)

Tool Name	Tag Name	Daemon Name	Type	Status	Info	History	User Details	Group Details	Heatmap	Concurrency	Denials
accurev	accurev_demo2	accurev	RLM	OK	Realtime	<a href="#">Graphs</a>	<a href="#">Table</a>	<a href="#">Table</a>	<a href="#">Graph</a>	<a href="#">Graph</a>	<a href="#">Table</a>
Altiumtool	altiumtag	N/A	Altium	OK	N/A	<a href="#">Graphs</a>	<a href="#">Table</a>	<a href="#">Table</a>	<a href="#">Graph</a>	<a href="#">Graph</a>	<a href="#">Table</a>
LMXtool	LMXTag	unknown	LM-X	LNK	Realtime	<a href="#">Graphs</a>	<a href="#">Table</a>	<a href="#">Table</a>	<a href="#">Graph</a>	<a href="#">Graph</a>	<a href="#">Table</a>
MATLAB	matlab_demo	MLM	FlexLM	OK	Realtime	<a href="#">Graphs</a>	<a href="#">Table</a>	<a href="#">Table</a>	<a href="#">Graph</a>	<a href="#">Graph</a>	<a href="#">Table</a>
MATLAB	matlab_demo2	MLM	FlexLM	OK	Realtime	<a href="#">Graphs</a>	<a href="#">Table</a>	<a href="#">Table</a>	<a href="#">Graph</a>	<a href="#">Graph</a>	<a href="#">Table</a>
MATLAB	matlab_demo3	MLM	FlexLM	OK	Realtime	<a href="#">Graphs</a>	<a href="#">Table</a>	<a href="#">Table</a>	<a href="#">Graph</a>	<a href="#">Graph</a>	<a href="#">Table</a>
NX	NX-demo2	ugslmd	FlexLM	OK	Realtime	<a href="#">Graphs</a>	<a href="#">Table</a>	<a href="#">Table</a>	<a href="#">Graph</a>	<a href="#">Graph</a>	<a href="#">Table</a>
NX	NX_demo	ugslmd	FlexLM	OK	Realtime	<a href="#">Graphs</a>	<a href="#">Table</a>	<a href="#">Table</a>	<a href="#">Graph</a>	<a href="#">Graph</a>	<a href="#">Table</a>
RMSTOOL	RMSTag	N/A	Sentinel	OK	Realtime	<a href="#">Graphs</a>	<a href="#">Table</a>	<a href="#">Table</a>	<a href="#">Graph</a>	<a href="#">Graph</a>	<a href="#">Table</a>

From the Admin tab, Go to Data Collection Interval and Click on Run Cron. This will force the cron operation for LAMUM to start collecting data. Your Home tab should now display Green with an OK for status and N/A for Daemon Name.

Expirations	PO	Licenses	Usage	Vendors	Tools	Servers	Reports	Settings
Home	Current	History	Denials	Users	Groups	Batch	Alerts	Admin

### Licenses being monitored

[Monitor Update](#)

[Reset Filter\(s\)](#)

Tool Name	Tag Name	Daemon Name	Type	Status	Info	History	User Details	Group Details	Heatmap	Concurrency	Denials
accurev	accurev_demo2	accurev	RLM	OK	Realtime	<a href="#">Graphs</a>	<a href="#">Table</a>	<a href="#">Table</a>	<a href="#">Graph</a>	<a href="#">Graph</a>	<a href="#">Table</a>
Altiumtool	altiumtag	N/A	Altium	OK	N/A	<a href="#">Graphs</a>	<a href="#">Table</a>	<a href="#">Table</a>	<a href="#">Graph</a>	<a href="#">Graph</a>	<a href="#">Table</a>
LMXtool	LMXTag	N/A	LM-X	OK	Realtime	<a href="#">Graphs</a>	<a href="#">Table</a>	<a href="#">Table</a>	<a href="#">Graph</a>	<a href="#">Graph</a>	<a href="#">Table</a>
MATLAB	matlab_demo	MLM	FlexLM	OK	Realtime	<a href="#">Graphs</a>	<a href="#">Table</a>	<a href="#">Table</a>	<a href="#">Graph</a>	<a href="#">Graph</a>	<a href="#">Table</a>
MATLAB	matlab_demo2	MLM	FlexLM	OK	Realtime	<a href="#">Graphs</a>	<a href="#">Table</a>	<a href="#">Table</a>	<a href="#">Graph</a>	<a href="#">Graph</a>	<a href="#">Table</a>
MATLAB	matlab_demo3	MLM	FlexLM	OK	Realtime	<a href="#">Graphs</a>	<a href="#">Table</a>	<a href="#">Table</a>	<a href="#">Graph</a>	<a href="#">Graph</a>	<a href="#">Table</a>
NX	NX-demo2	ugslmd	FlexLM	OK	Realtime	<a href="#">Graphs</a>	<a href="#">Table</a>	<a href="#">Table</a>	<a href="#">Graph</a>	<a href="#">Graph</a>	<a href="#">Table</a>
NX	NX_demo	ugslmd	FlexLM	OK	Realtime	<a href="#">Graphs</a>	<a href="#">Table</a>	<a href="#">Table</a>	<a href="#">Graph</a>	<a href="#">Graph</a>	<a href="#">Table</a>
RMSTOOL	RMSTag	N/A	Sentinel	OK	Realtime	<a href="#">Graphs</a>	<a href="#">Table</a>	<a href="#">Table</a>	<a href="#">Graph</a>	<a href="#">Graph</a>	<a href="#">Table</a>

Contact TeamEDA for questions:  
603-656-5200  
support@teameda.com