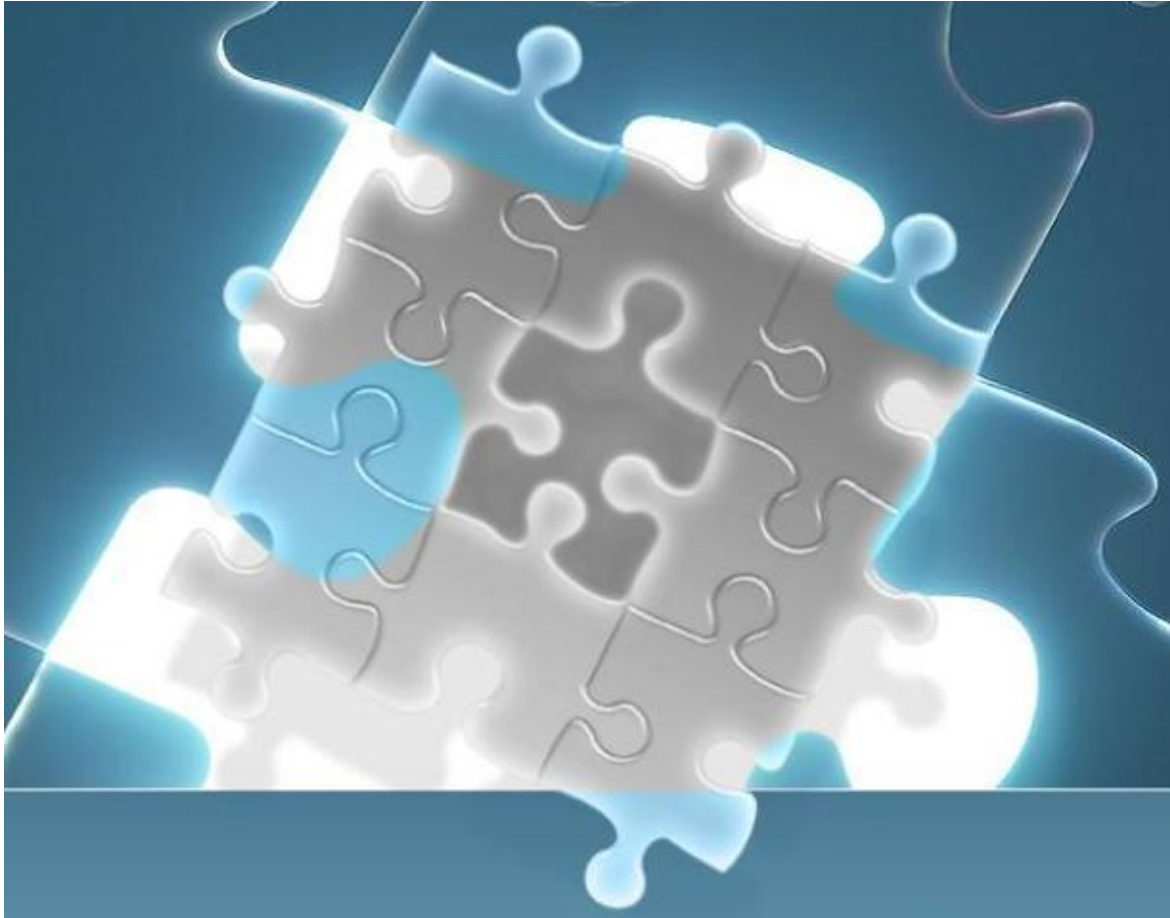




## Application Note

### Changing Colors in Combined and Multi Feature Graphs



There may be instances where the graphs don't show up or you want to change the colors of lines in the Combined-feature and/or the Multiple-feature graphs to help distinguish data lines, or in cases of certain "color-blindness".

Changing the colors is relatively easy but requires editing of the config.php file. Here are the instructions.

The Combines and Multi-feature graphs will not show up if the color settings are missing in the **config.php** file. The below error message will display if the color settings are missing.



### Multiple Feature Usage: accurev

#### Select Features

A maximum of 6 Features can be selected at a time

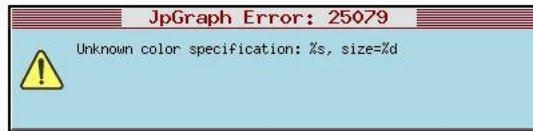
replica  TestAccu

#### Select Time Period(s)

Today's Graph  7 Day Graph  30 Day Graph  90 Day Graph  180 Day Graph  365 Day Graph  
 Custom: From:  To:

Display Graph ▾

### 7 Day Graph



This is a sample of the lines required in the config.php file:

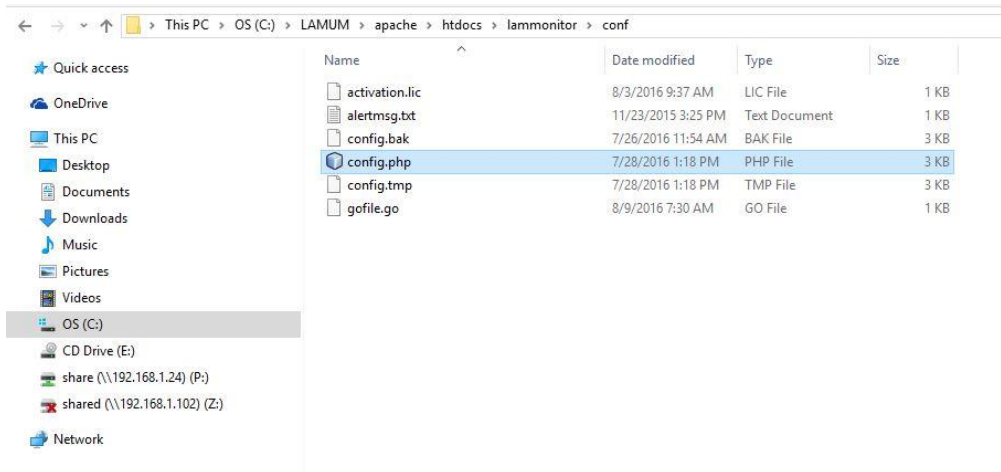
```

70
71 //Graph Settings, black is the default color and should be left unchanged: check http://www.w3schools.com/colors/colors_names.asp for valid color names and HEX values
72 $graphColors = array('black', 'red', 'blue', 'green', 'magenta', 'purple', 'aqua', 'cyan', 'magenta', 'orange', 'pink', 'blue', 'teal', 'lime', 'brown', 'gold', 'indigo');
73

```

### Steps to configure the color settings in config.php:

1. Open the LAMUM folder.
2. Go to this location → apache/htdocs/lammonitor/conf/config.php



3. Open the config.php file in a notepad or any editor.
4. At the end of the file, check if the color setting line is available. (Refer the screenshot).

```
// Color Threshold Settings
$color['high_val'] = '90';
$color['mid_val'] = '75';
$color['low_val'] = '1';
$color['high_color'] = 'Red';
$color['mid_color'] = 'Gold';
$color['low_color'] = 'Green';

// Color Threshold Settings for averages
$avgcol['high_val'] = '50';
$avgcol['mid_val'] = '25';
$avgcol['low_val'] = '1';
$avgcol['high_color'] = 'Red';
$avgcol['mid_color'] = 'Gold';
$avgcol['low_color'] = 'Green';

// PHP Settings
if(!date_default_timezone_set($config['timezone']))include './timezone.php';
error_reporting(E_ALL ^ (E_NOTICE | E_WARNING));
// Misc Settings
$config['connectedHistoryGraphUsage'] = false;
//Graph Settings, black is the default color and should be left unchanged: check http://www.w3schools.com/colors/colors_names.asp for valid color names and HEX values
$graphColors = array('black', 'red', 'olivedrab', 'cyan', 'darkgrey', 'purple', 'aqua', 'cyan', 'magenta', 'orange', 'pink', 'blue', 'teal', 'lime', 'brown', 'gold', 'indigo');
```

Make sure you have this line, you can manually set the color here.

5. If the line is missing, copy and paste the below line in bold and save the file. (You can manually set the colors here)

**//Graph Settings, black is the default color and should be left unchanged: check [http://www.w3schools.com/colors/colors\\_names.asp](http://www.w3schools.com/colors/colors_names.asp) for valid color names and HEX values**  
**\$graphColors = array('black', 'red', 'olivedrab', 'cyan', 'darkgrey', 'purple', 'aqua', 'cyan', 'magenta', 'orange', 'pink', 'blue', 'teal', 'lime', 'brown', 'gold', 'indigo');**

6. Go back to your webpage and check if the graph is displayed.

If you are having trouble setting up the colors, do not hesitate to contact TeamEDA at: [support@teameda.com](mailto:support@teameda.com) or 603-656-5200.