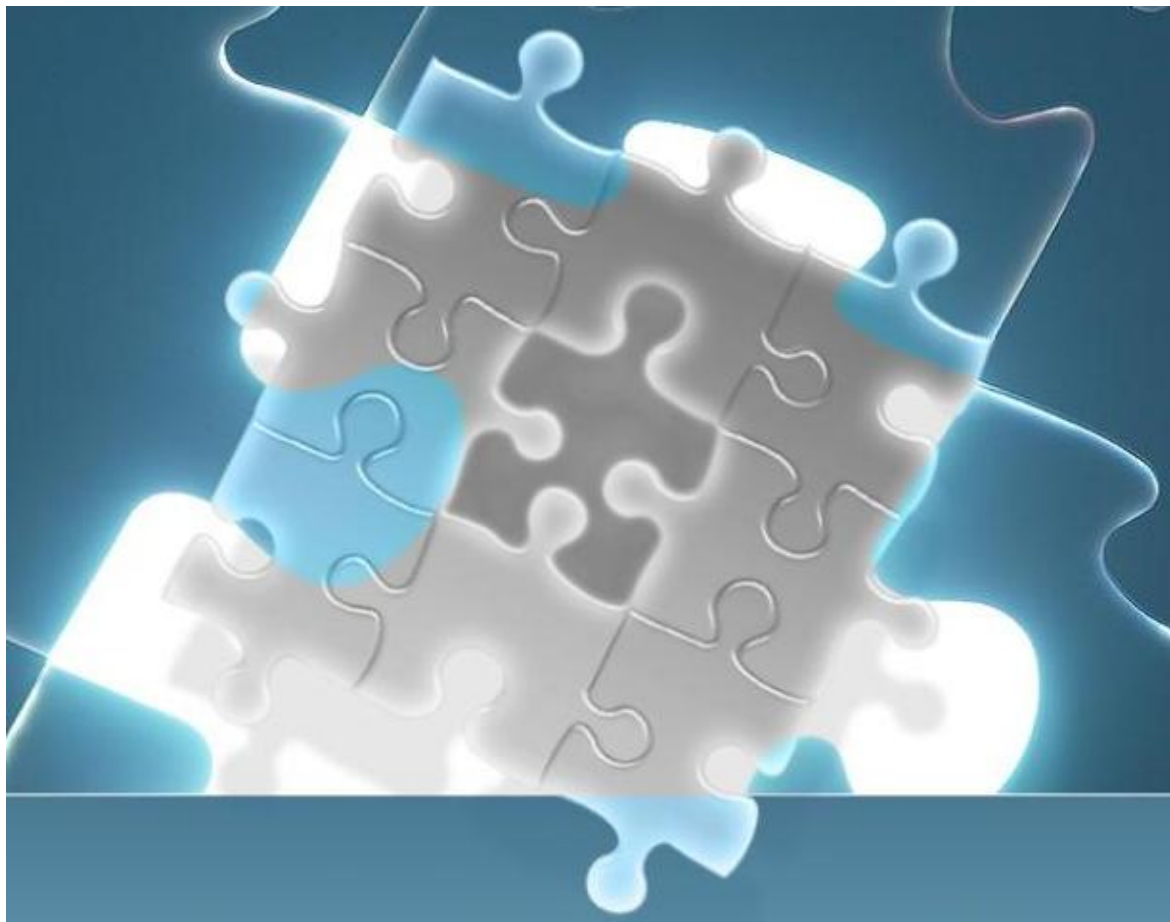




white paper

## “Command Center” look/feel with LAMUM

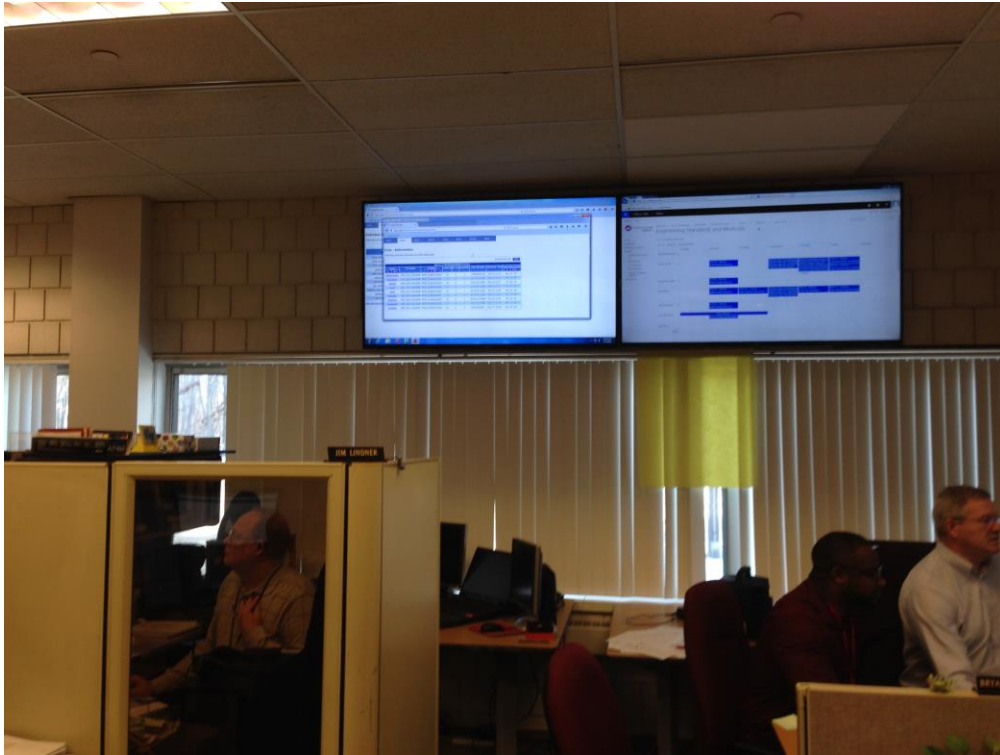
Guy D. Haas, BS, MBA, President, TeamEDA, Inc.



Consider having the following reports “cycle” through on a large screen in the room:

- Current Checkout Overview
- Current Checkout “gas gauges”
- Current Checkout Details for “key” licenses
- Scheduler and daemon status (Usage/Home page)
- Alerts (Daemon-down, Capacity threshold,...)

Several Customers have invested in a large screen monitor/TV (65"+). The monitor is mounted high on wall, visible to the license/engineering management team. Here is an example of how that might look:



This is ideal if you have a team in the same room or engineering management personal regularly walking by. This is also desirable if you want to impress someone that a) you take license management seriously and b) you can know immediately the status of critical license checkouts. This is very impressive, inexpensive, and if you want to make a name for yourself- DO IT!

To implement this, you will need a few things:

1. An inexpensive PC/monitor with access to the LAMUM server
2. A large monitor (~65") or two, which will be a repeater of the inexpensive PC monitor
3. Firefox browser
4. AnalogX- AutoTab freeware
5. Tab Auto Reload (Mozilla Firefox plug-in)

Total cost should be under \$3k plus installation of the large monitor(s).

Here are the steps to setting this up and running:

1. Install the inexpensive PC and download Firefox
2. Go to AnalogX ([www.analogx.com](http://www.analogx.com)) and download the AutoTab package (<http://www.analogx.com/contents/download/System/autotab/Freeware.htm>) \*
3. Go to Mozilla to get Tab Auto Reload ( <https://addons.mozilla.org/en-US/firefox/addon/tab-auto-reload/>)
4. Configure the AutoTab and Tab Auto Reload with desired LAMUM URL's (use the :8182 portal), and time interval for each (usually 10 seconds per view). Make sure it is in a recycling mode.

### Here is a write up on AnalogX AutoTab:

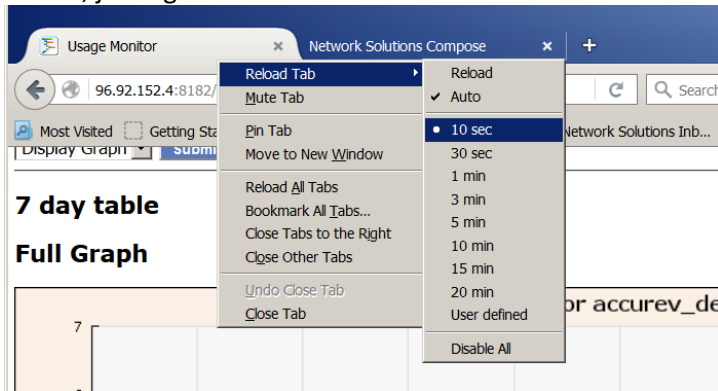
"Operation is simple – just run the program from the Start Menu, and it will appear on the task bar (on the lower right of the screen in most cases, right by the clock). If the little tab icon is green, then the program will cycle through the open applications at a user specified interval, if it's red, it's disabled; to start it up, simply double-click on the icon.

There aren't a whole lot of options, but if you right-click on the icon, you can bring up a menu to get to the configuration dialog – from here you can set the number of seconds it waits before switching to the next window. You may also specify that it should minimize all the windows except the one visible (Minimize Inactive = Enabled), or have it only cycle through the maximized applications one after the other (Minimize Inactive = Disabled)."

### Here is a write up on Mozilla Tab Auto Reload:

Tab Auto Reload is also straightforward. Just download the tool from the link. It will automatically be added to your Mozilla browser and then it will ask you to restart the browser when it is done.

To use, just right mouse click on the tab and choose a reload time option.



A good sequence might be:

1. License Server status (Usage/Home page)
  2. Current Overview (Usage/Current/Overview)
  3. Filtered Current Overview (filtered on most critical Tags)
  4. User Details, sorted by longest checkout, on most critical App
  5. User Details, sorted by longest checkout, on 2<sup>nd</sup> most critical App, etc
- Play around with it until you have the desired views, sequence and timing interval.

Show it off with pride!

\* AnalogX AutoTab is a product of AnalogX. Tab Auto Reload is a product of Mozilla. TeamEDA is not responsible for AnalogX or Mozilla products. For technical support contact AnalogX or Mozilla.

Please call for more information or a technical support on TeamEDA products please call 603-656-5200 or [info@teameda.com](mailto:info@teameda.com)