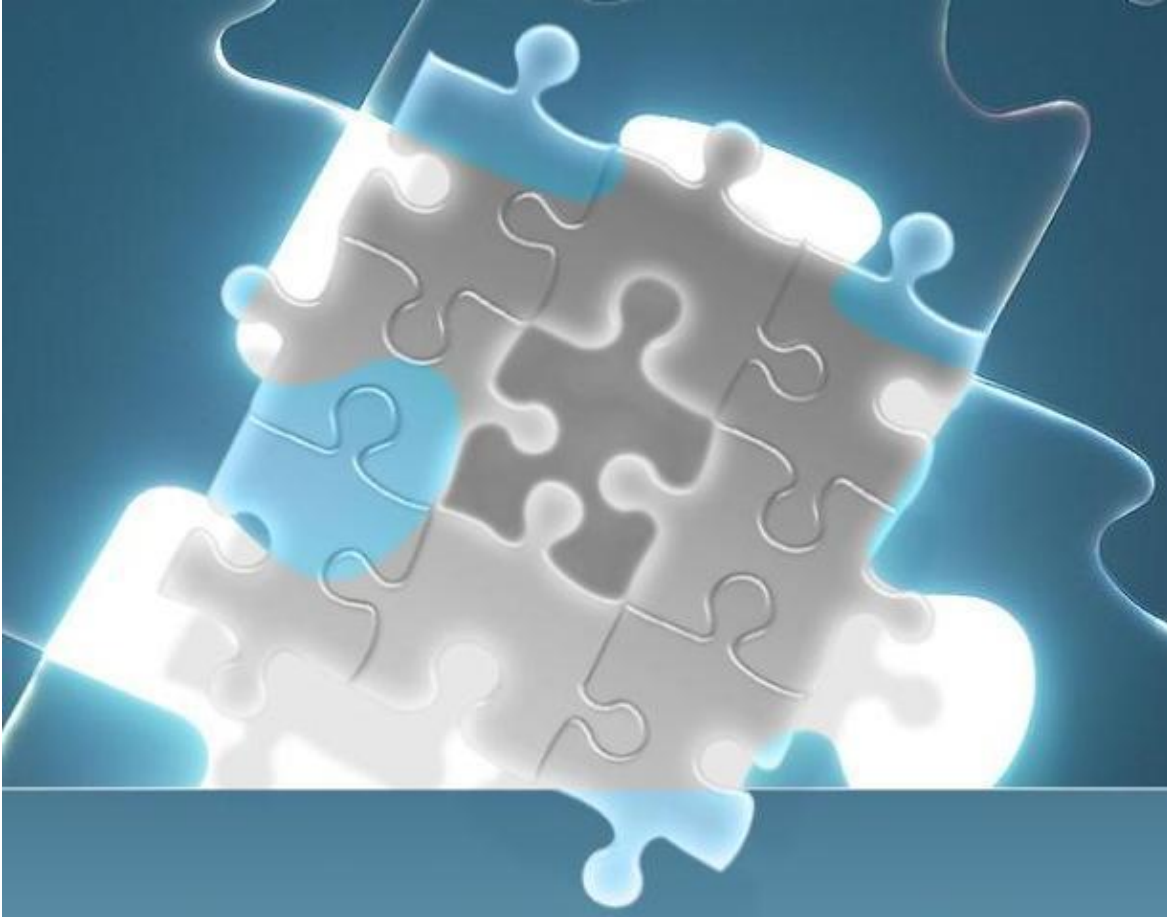




## Application Note

# Configuring Active Directory in LAMUM



# Configuring Active Directory

LAMUM has the ability to connect to your organization's Active Directory (AD) server to match usernames/ID with user information. Setting up AD allows LAMUM access to the AD server to poll for user specific information such as email address, phone number, location, and other contact information. LAMUM users will simply click on a username/ID to access this information from within LAMUM. The AD link is also an important component in the Long Checkout Alert system, which can automatically send a "Warning Message" to the violator of a Long Checkout rule, using the Users email address. The mail server must also be set and active for the Alerts to go out.

So the Active Directory link has 2 purposes:

- Be able to see username/ID information in the Current Users report, Historical Detail report by user, and the User Detail report
- Be able to automatically send out long checkout Warning Messages

The Active Directory setup screen can be found under Usage, Admin,....."Mail & Active Directory Setup". Read the tutorial to the right of the setup fields.

Home	Current	History	Concurrency	Denials	Users	Groups	Alerts
<b>Active Directory and Mail Server Settings.</b>							
<b>Active Directory</b>				<b>Settings</b>			
Active Directory Host:	<input type="text" value="10.0.2.15"/>			To connect to your Active Directory server you will need your host IP address or Domain Name, an account on the AD server with privileges to read user information, the password associated with that account, and lastly, you will need the AD path to the user information.			
Active Directory Port:	<input type="text" value="(Optional. Default: 389)"/>						
Active Directory User:	<input type="text" value="LAMUM@us.office.compa"/>			The easiest way to find your AD path is to use a utility like <a href="#">Active Directory Explorer</a> , offered by Sysinternals through Microsoft. Simply load your Host Address, Username, and Password into <a href="#">Active Directory Explorer</a> , and use the navigation panel to locate your users lists. The path will then be displayed in the bar above the navigation panels.			
Active Directory Password:	<input type="password" value="....."/>						
Active Directory Path:	<input type="text" value="DC=us,DC=office,DC=cor"/>			Example: <b>Active Directory Host:</b> office.company.org <b>Active Directory Port:</b> 389 <b>Active Directory User:</b> ADUser@office.company.org <b>Active Directory Password:</b> ADUserPassword <b>Active Directory Path:</b> DC=office,DC=company,DC=org			

Gather the following information from your AD administrator:

1. IP address or domain of the AD server
  - a. We recommend for attempting the domain address in the configuration.
  - b. If unable to connect via domain, then try the IP address
2. Port number used by the AD server if non standard
  - a. The standard port used for AD is 389
  - b. If your AD server is operating on 389, it does not need to be added to the configuration.
3. Create a user account for LAMUM to use with access to the AD directory
  - a. Any user account with AD access should work with LAMUM
  - b. Best practice is to create a user account strictly for LAMUM instead of sharing an account with a user or other application.
4. Create a password for LAMUM user account
5. The LDAP path for the AD server
  - a. See below.

Active Directory LDAP pathing is an important setting to configuring AD within LAMUM. This is the information that tells LAMUM where on the AD server to look for user information. It is best to keep the path as broad as possible. LAMUM will search the entirety of the path you set for user information.

LDAP path example:

For a domain: us.office.company.org

LDAP Path: DC=us,DC=office,DC=company,DC=org

If you are having troubles finding the correct path, there are utilities available that will assist you in finding the correct path. One such utility is "[Active Directory Explorer](#)" available from **Microsoft** via download.

<http://technet.microsoft.com/en-us/sysinternals/bb963907.aspx>

Using the utility, connect to the AD server with the same information you plan on using for LAMUM.

### Multiple-domain AD organizations:

To activate multiple domain please select multiple domains checkbox. It will allow you to setup alternate active directory server. Please insert host IP address, port, user, password and AD path to the user information. Please click update for changes to take effect.

Release Version : 8.0.0.0	
<a href="#">Logout</a>	
Expirations	PO
Licenses	Usage
Vendors	Tools
Servers	Reports
Settings	Daemon
Home	Current
History	Denials
Users	Groups
Batch	Alerts
Parsers	Admin

### Active Directory and Mail Server Settings.

Multiple domains?

Active Directory	Settings
Active Directory Host:	192.168.1.200
Active Directory Port:	(Optional. Default: 389)
Active Directory User:	LAMUM@TEAMEDA.local
Active Directory Password:	*****
Active Directory Path:	CN=Users,DC=teamede.D

To connect to your Active Directory server you will need your host IP address or Domain Name, an account on the AD server with privileges to read user information, the password associated with that account, and lastly, you will need the AD path to the user information.

The easiest way to find your AD path is to use a utility like [Active Directory Explorer](#), offered by Sysinternals through Microsoft. Simply load your Host Address, Username, and Password into [Active Directory Explorer](#), and use the navigation panel to locate your users lists. The path will then be displayed in the bar above the navigation panels.

**You must click Update for changes to take effect!**

Example:  
**Active Directory Host:** office.company.org  
**Active Directory Port:** 389  
**Active Directory User:** ADUser@office.company.org  
**Active Directory Password:** ADUserPassword  
**Active Directory Path:** DC=office,DC=company,DC=org

**Multiple Domains:** To activate multiple domain please select multiple domains checkbox.

Multiple domains?

It will allow you to setup alternate active directory server. Please insert host IP address, port, user, password and AD path to the user information. Please click update for changes to take effect.

Alternate Active Directory	Settings
Active Directory Host:	192.168.1.253
Active Directory Port:	(Optional. Default: 389)
Active Directory User:	user1-dc1@VMDOM.local
Active Directory Password:	*****
Active Directory Path:	CN=Users,DC=VMDOM,D

LAMUM, to be able to send email alerts, needs access to a mail server. You will need the connection information for your outgoing mail server (SMTP). You will need to know the SERVER HOST address, and the correct SERVER PORT. In some instances, mail servers require authentication to send emails. If this is the case for your server you will need to set SMTP AUTHENTICATION to 'YES' and add in a USERNAME and PASSWORD to the mail account that you wish to use.

**You must click Update for changes to take effect!**

Example:  
**Mail Server Host:** mail.company.org  
**Mail Server Port:** 25  
**Admin Email:** robot@company.org

Mail Server	Settings
Mail Server Host:	mail.teameda.com
Mail Server Port:	25
Admin Email:	kinnari@teameda.com
SMTP Security:	None
SMTP Authentication:	Yes
SMTP Username:	kinnari@teameda.com
SMTP Password:	

**If you get stuck-**

Contact TeamEDA for help:  
603-656-5200  
support@teameda.com