



Application Note

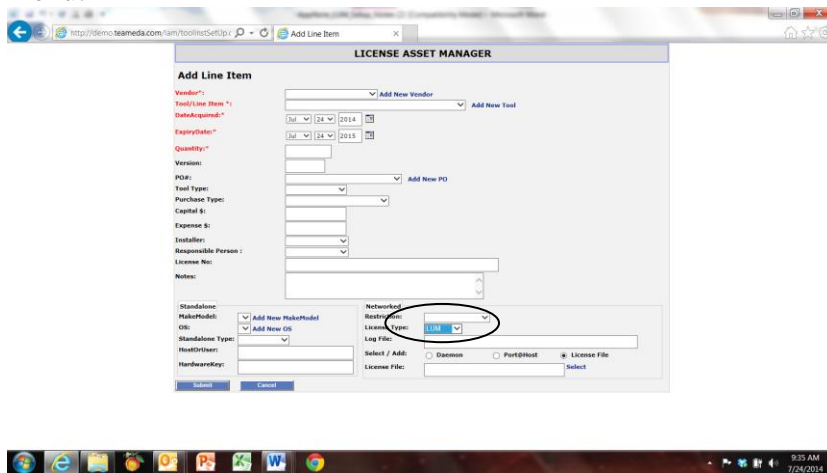
IBM/Dassault LUM Setup



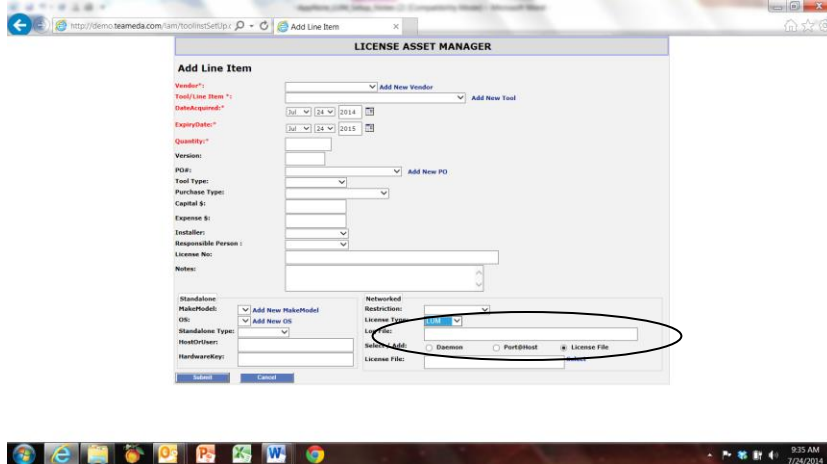
The IBM License Use Manager (LUM) setup is very similar to a FlexLM tool except that the port field is not used, and the LUM executable is not supplied with the LAMUM install, AND a LUM log file must be parsed for usage data.

Basic Setup:

Add a New Line Item under the “Licenses” Tab, select “LUM” from the “License Type” menu.



The full path to the LUM log file **MUST** be entered in the “Log File” field.



When setting up a line item under the “Licenses” tab a [daemon/port@host](#) must be added but the port field only needs a place holder.

The LUM client must be installed on the LAMUM host computer.

A windows version can be downloaded from IBM. Once downloaded, install the entire package using the default settings. The I4LS.INI file must be edited and the path to I4blt executable must be added to the lammonitor/conf/config.php file. Follow the detailed instructions below.

Edit the I4LS.INI file:

Install the full package and edit the ProgramData\IBM\LUM\I4LS.INI file. To modify it, change the “NumDirectBindServers” variable to the number of servers you have, and add lines afterwards with the variable “DirectBindServer# with the # replaced by an incrementing number starting with one, and each one to a different server in the format:

```
ip:<SERVER NAME or IP ADDRESS>[PORT]
```

Note the example below from the I4LS.INI file.

```
NumDirectBindServers=4
DirectBindServer1=ip:huswla1q.hs.utc.com[1515]
DirectBindServer2=ip:husrku07.hs.utc.com[1515]
DirectBindServer3=ip:chv0sx37.goodrich.root.local[1515]
DirectBindServer3=ip:chv0sx39.goodrich.root.local[1515]
```

Edit the config.php file:

The \$lmutil['i4blt_loc'] variable in the LAMUM\apache\htdocs\lammonitor\conf\config.php file needs to point to the ib4lt executable.

Once edited, the last line in the below example should look similar to your file.

```
$config['base_url'] = 'http://192.168.1.102:8182/lammonitor/';
// $config['base_url'] = 'http://[hostname]:8182/lammonitor/';
$config['app_title'] = 'Usage Monitor';
$config['app_version'] = '6.1.2.0';
$config['logfile'] = '/logs/lammonitor.log';
$config['lam_config'] = '/lam/config_lam.txt';
$config['featureinfo'] = "";
$config['timezone'] = 'America/New_York';
$config['root'] = 'C:\LAMUM\lammonitor';
$config['systemroot'] = 'C:\LAMUM\System';

// License manager tools location
$lmutil['lmutil_loc'] = 'C:\LAMUM\apache\htdocs\lammonitor\utils\demo\lmutil.bat';
$lmutil['rlmutil_loc'] = 'C:\LAMUM\apache\htdocs\lammonitor\utils\demo\rlmutil.bat';
$lmutil['sentinelrms_loc'] = 'C:\LAMUM\System\Sentinel\lsusage.exe';
$lmutil['i4blt_loc'] = 'C:\IFOR\WIN\BIN\i4blt.exe';
```

Refresh LAMUM, click Monitor Update in Usage/Home, click Run Cron in Usage/Admin/Data Collection Interval. You should now see a green light for the LUM tool. Call us if you have any questions. 603.656.5200